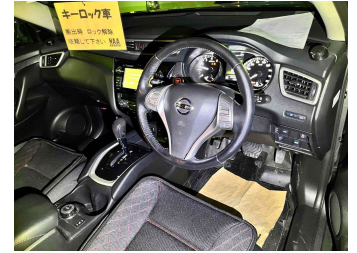
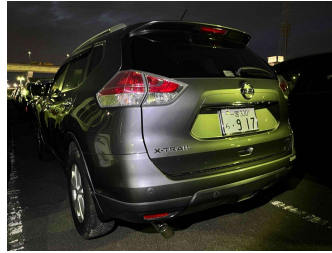


2016 Nissan X-Trail XTRAIL 20X 4WD




Purchase Price **\$20,990**

Includes GST
Excludes on-road costs of \$300


Indicative repayments

\$130.81 per week*

Based on a 208 week term & \$1,000 deposit.
Total repayments (208) = \$28,208.93



Gain peace of mind with
Mechanical Breakdown Insurance. Ask us how.



Top features

- » 2 AIRBAGS
- » 360 DEGREE CAMERA
- » AA Safety Certified
- » ABS Braking
- » Air Conditioning
- » Anti-Collision
- » Auto Stop/Start
- » Bluetooth
- » CD Player
- » Central Locking
- » Child seat anchor poin...
- » Climate Control
- » Cruise Control
- » Cruise Control
- » Electric Mirrors (Retr...
- » ELECTRIC TAILGATE
- » ESC
- » Factory Monsoons

Body Style
5 door, SUV / 4x4

Odometer
88,942 km

Engine
2000 cc, Internal Combustion

Fuel Type
Petrol


Transmission
Auto, 4WD

Wheels
Factory Alloys

VIN
-

Interior
Black, Leather

Safety



Based on 2023 UCSR rating for 14-21 models

Reg No.
-

Ext Colour
Grey

History
Ex-Overseas

Seats
5 seats, Faux Leather

CO2 Emissions
★★★★☆
165 grams/km


Energy Economy
★★★★☆☆
Annual fuel cost of \$2,780
7.1L per 100km

Cost per year is an estimate based on petrol price of \$2.80 per litre and an average distance of 14000 km. Emissions and Energy Economy figures standardised to 3P WLTP.

Stock ID: 5671



Tauranga Cars | Phone 0800 921 028 | Email jono@taurangacars.co.nz
10 Fifteenth Avenue, Tauranga 3112, New Zealand
www.taurangacars.co.nz



★★★★★
4.78 | 1069 reviews

* Tauranga Cars is not a lender nor a financial adviser. Any amounts displayed should not be seen as an offer of finance or taken as financial advice. The interest rate, fees and loan term used in this calculation may not actually represent those available from lenders. Actual interest rates, fees and loan terms will vary per lender and are typically based on an assessment of your credit risk and responsible lending criteria. Any repayment amounts displayed are indicative only and have been calculated using several other indicative inputs. The interest rate used in this calculation is an arbitrary 13.95%, however exact interest rates vary per lender. The term of the loan used in this calculation is 208 week. Exact terms available vary per lender although options typically include 6, 12, 18, 24, 36, 48 and 60 months. This calculation also includes two typical mandatory fees charged by lenders. These are an account admin fee of \$2.50 per month (other payment frequencies may be available) and a one-off establishment fee of \$450.00. Typically, this fee can be paid upfront or, as in this calculation, be capitalised over the contract term, ie. included in the loan amount. These fees can vary per lender and other non-mandatory fees and charges may also apply. The total amount of repayments has been calculated by multiplying 208 weekly repayments (based on a 208 week term) by the weekly repayment amount of \$130.81 which equals \$28,208.93. This calculator does not consider any of your own personal circumstances and we strongly suggest you seek budgeting advice prior to committing to any loan contract. Responsible lending criteria and lender terms and conditions will likely apply to any finalised loan contract. Proof of security and/or vehicle insurance may also be required before proceeding.